

SEAT COLLAR TECH DOC



Specifications

- Precision-machined aluminum collar
- Stainless steel bolt, washer, and barrel nut
- Available sizes: 30mm, 32mm, 35mm, 36.4mm
- Made in Petaluma, California
- Built for long-term durability and serviceability

Installation & Fitment

Seatpost clamps are sized to match the outside diameter of your frame's seat tube, not the seatpost itself.

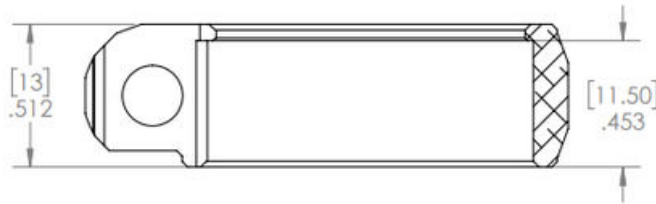
Frame tolerances and material thickness can vary. Each nominal size is designed to fit a seat tube within $\pm 0.5\text{mm}$ of the stated diameter.

For example, a 30.0 clamp will fit seat tubes measuring 29.5mm to 30.5mm.

We recommend verifying your frame's seat tube diameter before ordering.

For installation:

- Apply a small amount of anti-seize to the inside of the clamp when installing on aluminum, steel, or titanium frames
- Torque to a maximum of 6 Nm
- Clamp height: 113mm
- Inner lip height: 11.50mm



A small amount of anti-seize is applied to the bolt threads during assembly. Reapply as needed after washing or service.

Support

If you have questions about fitment or compatibility, contact us at: info@whiteind.com or call +1(707)769-5600